

## 2025 Banderas Bay Regatta Sailing Instructions

### Attachment C – Approximate Mark Locations & Descriptions

**Approximate Mark Positions, Colors, Shapes:**

	Latitude	Longitude	Mark Color and Shape
Mark L	Approximately 0.2 nm Downwind from Start Line		Yellow Tetra
RC Boat	20° 42.75' N	105° 18.90W	Orange Flag
Start			Red Tetra to Port
Mark W	Approx. 1.8nm Upwind from RC		Anderson (Orange 8 ft tetra)
Mark R	60 degrees below W		Orange Tetra
Mark M	20° 43.68' N	105° 24.68' W	Yellow Tetra
Mark LC	20° 43.809'N	105° 21.851'W	Orange Tetra
Mark S	20°40.110'N	105°18.310'W	Orange Tetra
Mark C	20°39.000'N	105°15.710'W	PV Sea Buoy (fixed)
Finish			Red Tetra to Port

**Mark Layout Notes:**

Mark W will be placed based on wind direction, and will be approximately to weather of the middle of the start/finish line. Course and distance to these marks will be announced by radio before the preparatory signal.

Mark LC is approximately 1.25nm bearing 125°M from the La Cruz breakwater.

Mark S is in safe water (~ 45ft) approximately 1 NM off the Ameca River, Mark S also serves as a limit mark for safe water on the distance courses. Mark S and the shore is an OBSTRUCTION under the rules. Boats may not sail between Mark S and the shore unless it is a turning mark.

Mark Shapes and Colors (if changed) will be announced at the radio 15 minutes before the first warning on VHF 72. The locations shown are approximate. If there is a difference between the actual mark position and the coordinates above, **ACTUAL MARK POSITION AND COLOR WILL ALWAYS PREVAIL**. Please hail the RC if a mark is missing. The RC may ask the fleet to continue to race rounding stated GPS coordinates. Redress will not be granted for mark positions different from published Lat/Lon.

## Attachment C – 2025 VYC Courses

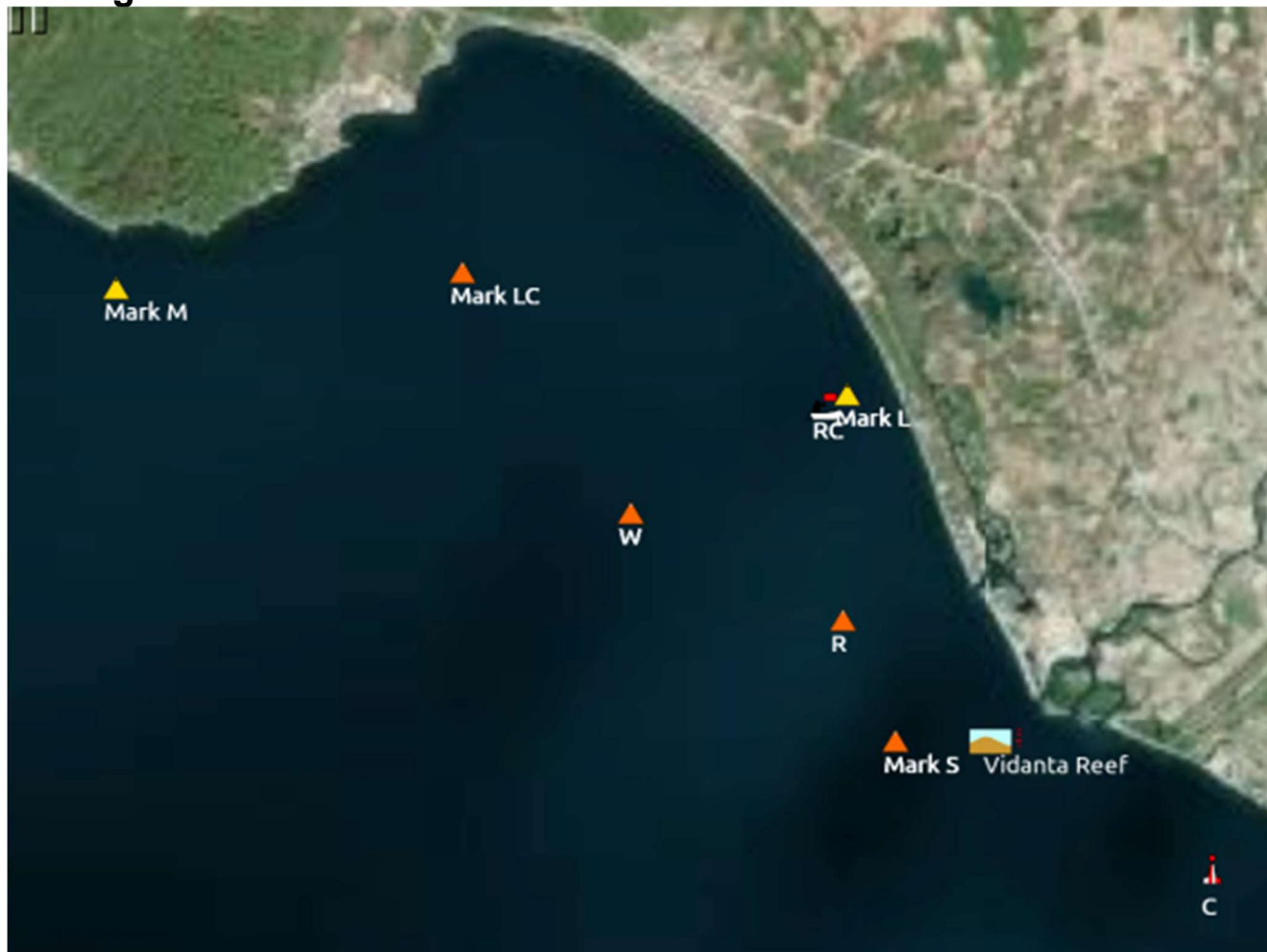
<p><b>Course 1</b>            Start            W2 – Starboard            LC – Port            S – Port            L - Port            Finish            Approx 12.2nm</p>	<p><b>Course 5</b>            Start            W2 – Port            S – Port            C – Port            S – Starboard            LC – Port            W2 – Port            L - Port            Finish            Approx 19.8nm</p>
<p><b>Course 2</b>            Start            W2– Starboard            LC – Port            S – Port            C – Port            S – Starboard            L - Port            Finish            Approx 17.9nm</p>	<p><b>Course 6</b>            Start            W – Port            R - Port            L – Port            W – Port            L - Port            W - Port            L - Port            Finish            Approx 13.1nm</p>
<p><b>Course 3</b>            Start            W2 – Port            S – Port            C – Port            S – Starboard            L - Port            Finish            Approx 12.8nm</p>	<p><b>Course 7</b>            Start            W - Port            R - Port            L - Port            W - Port            R - Port            L - Port            Finish            Approx 11.0 nm</p>
<p><b>Course 4</b>            Start            W2 – Port            S – Port            LC – Port            W2 – Port            L-Port            Finish            Approx 14.2nm</p>	<p><b>Course 8</b>            Start            W – Starboard            LC – Port            M - Port            S – Port            L - Port            Finish            Approx 16.5nm</p>

**Start line is restricted. Competitors may only pass through the start line while starting or finishing.**

**THE FINISH: All finishes will be *upwind* between the red tetra to port and the race committee boat to starboard.**

## Attachment C – 2025 VYC Courses

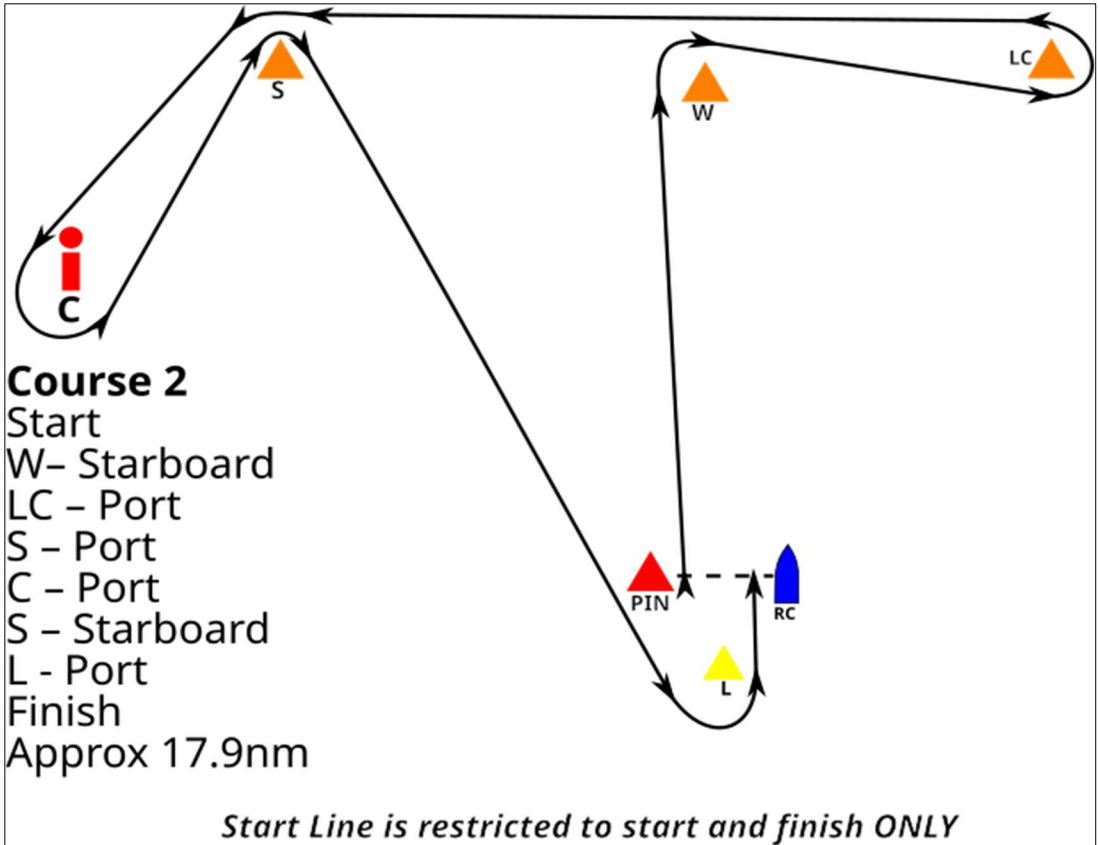
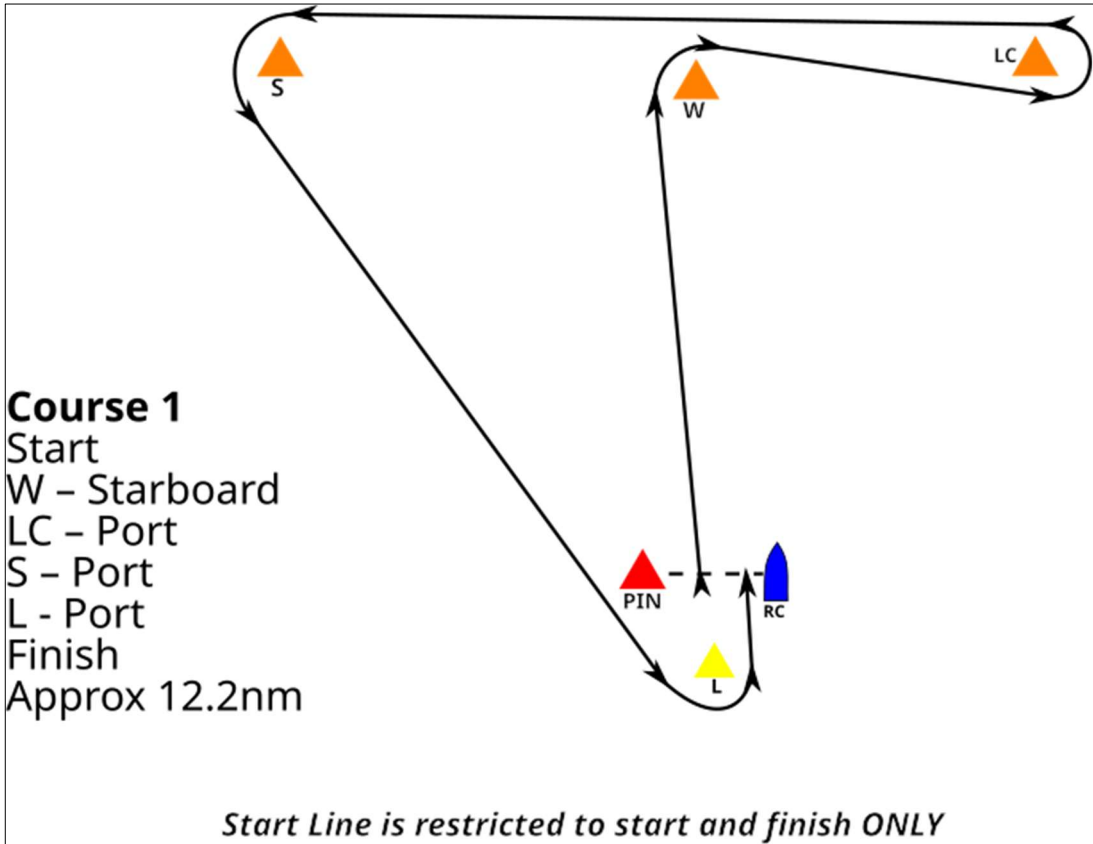
### Racing Area

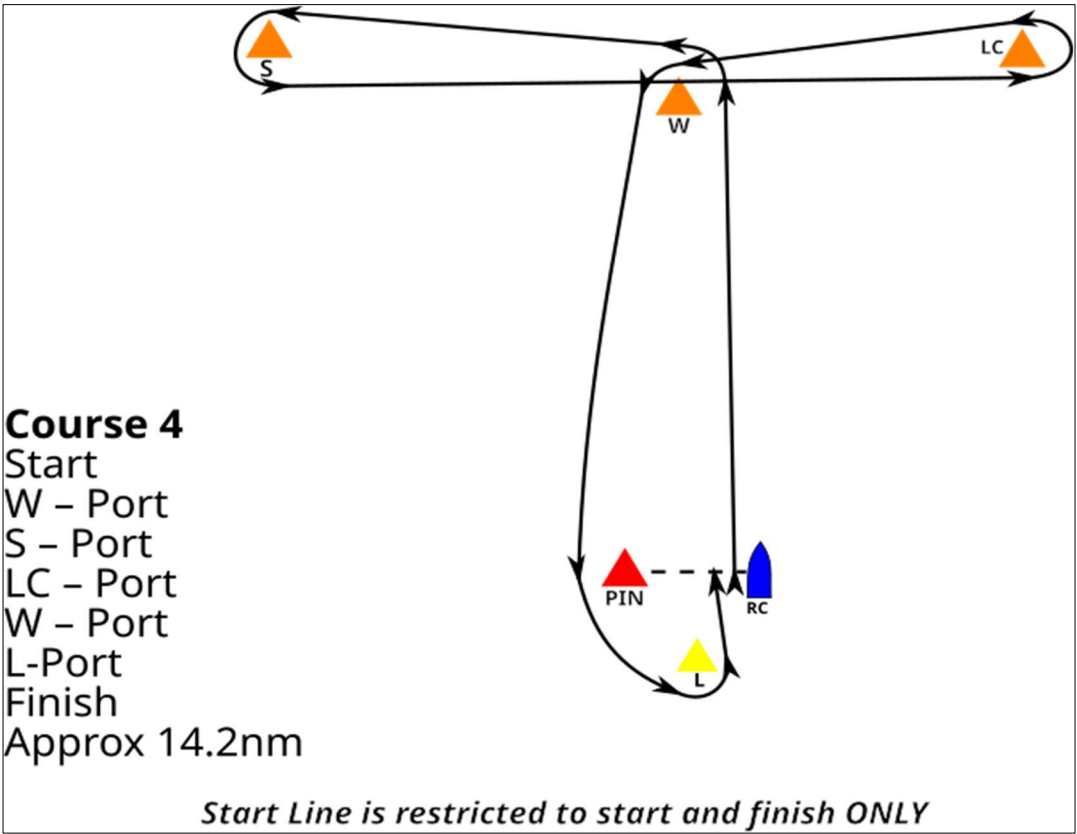
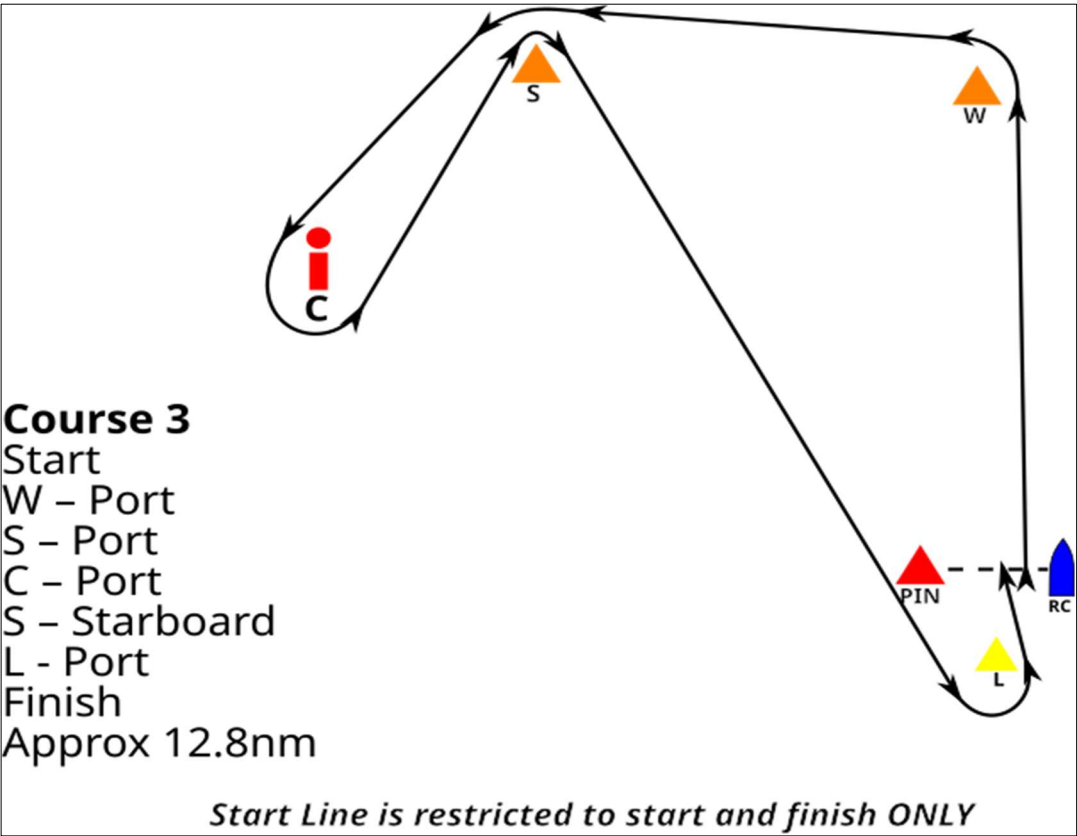


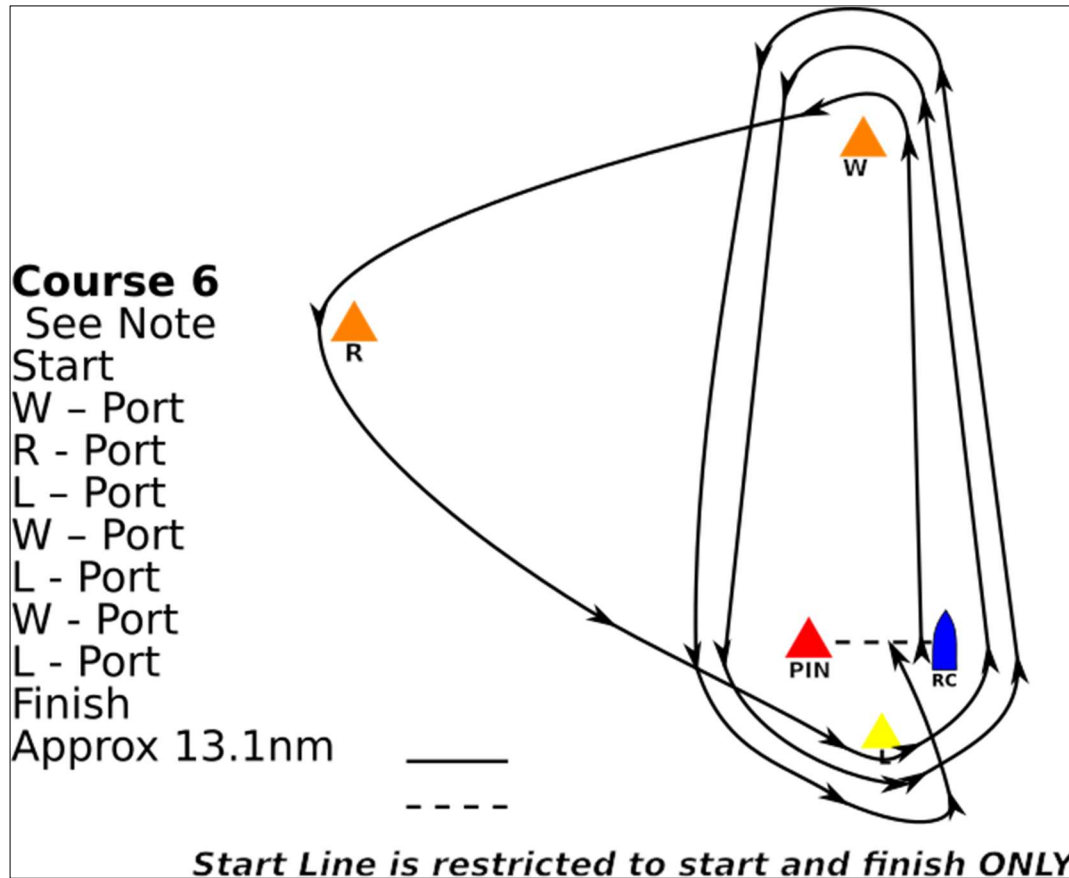
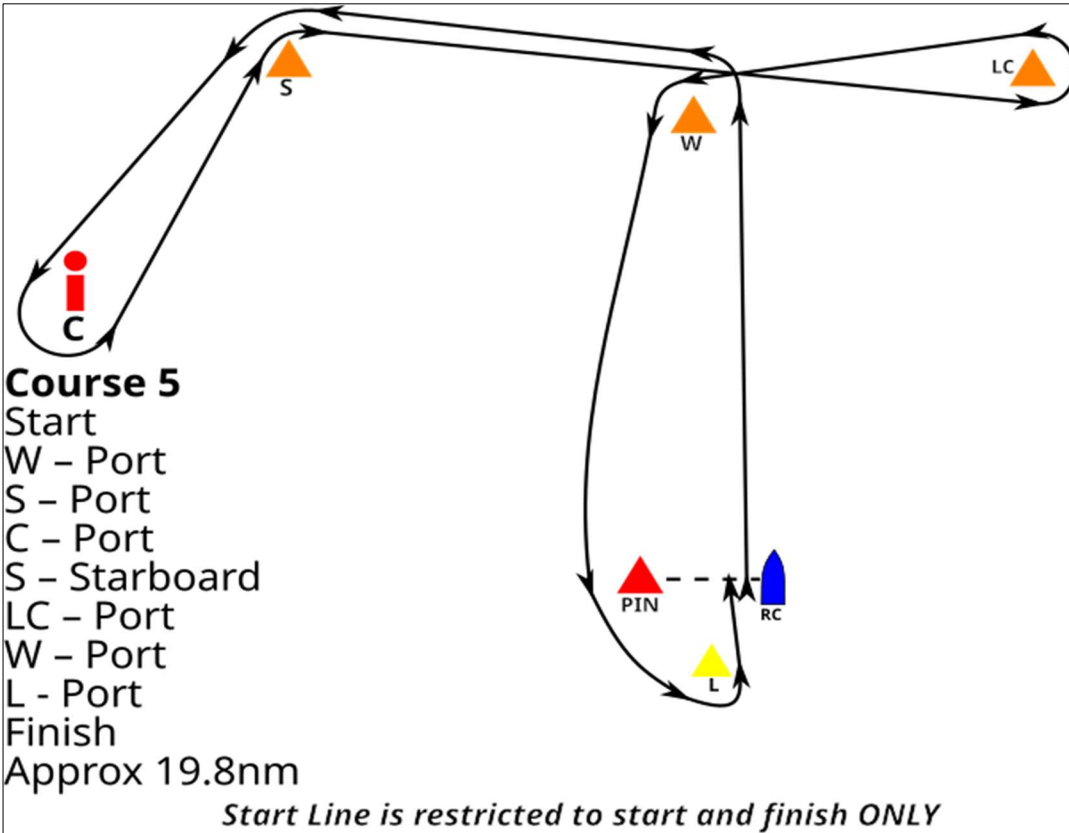
#### Marks shown in Approximate Locations

“W” is shown for a Wind direction of 240° M, but will be set by wind direction on race day.

There is sometimes a yellow Navy hazard mark close to the shoal at the entrance to the Amica River (shown as “Vidanta Reef”), it marks an obstruction. It is NOT a mark of our courses.

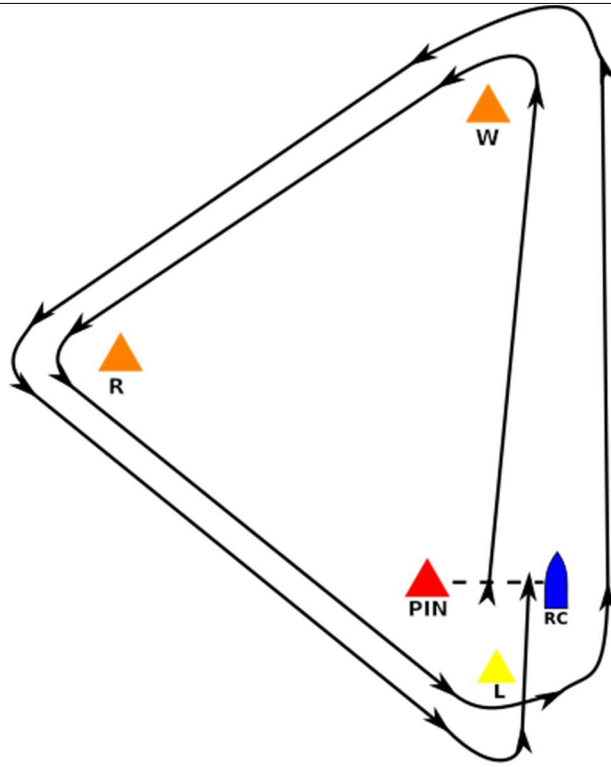






### Course 7

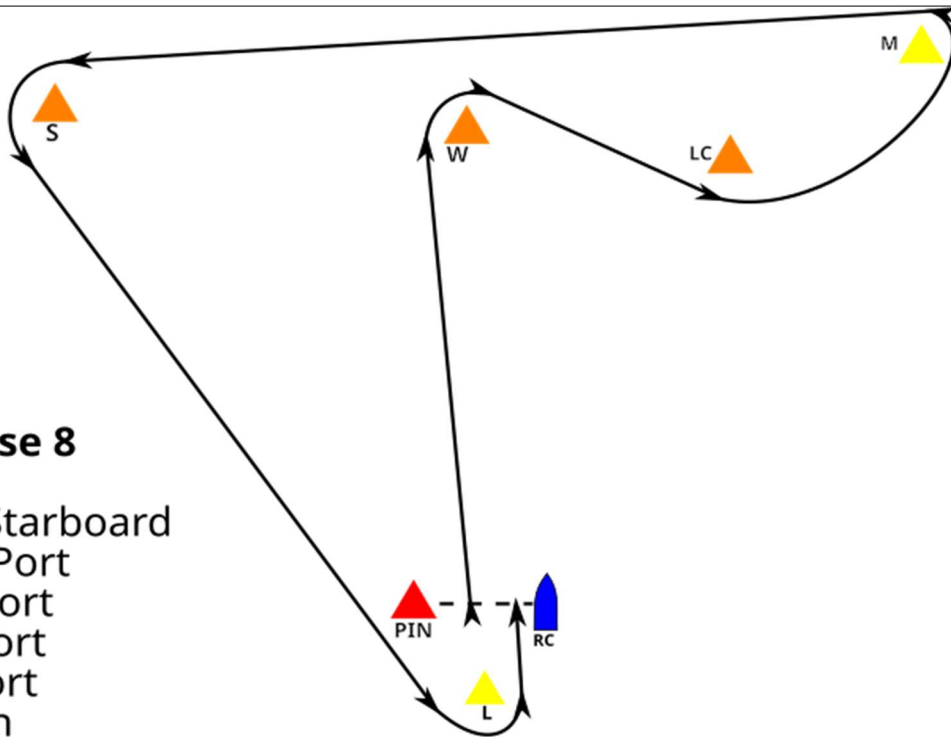
Start  
W - Port  
R - Port  
L - Port  
W - Port  
R - Port  
L - Port  
Finish  
Approx 11.0 nm



*Start Line is restricted to start and finish ONLY*

### Course 8

Start  
W - Starboard  
LC - Port  
M - Port  
S - Port  
L - Port  
Finish  
Approx 16.5nm



*Start Line is restricted to start and finish ONLY*